



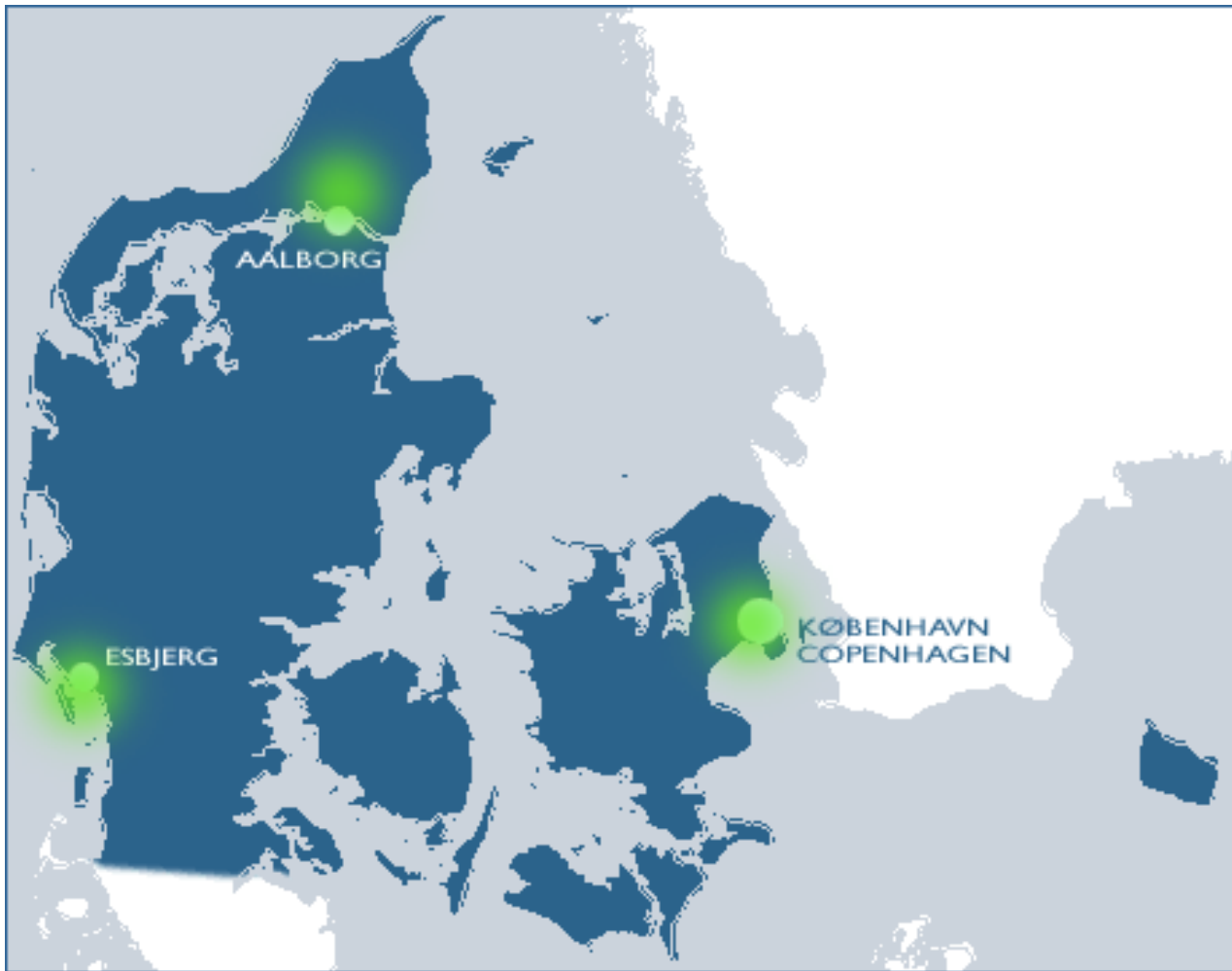
AALBORG UNIVERSITET

Aalborg University - a brief introduction

Niels Maarbjerg Olesen



Aalborg University - in Aalborg, Esbjerg and Copenhagen



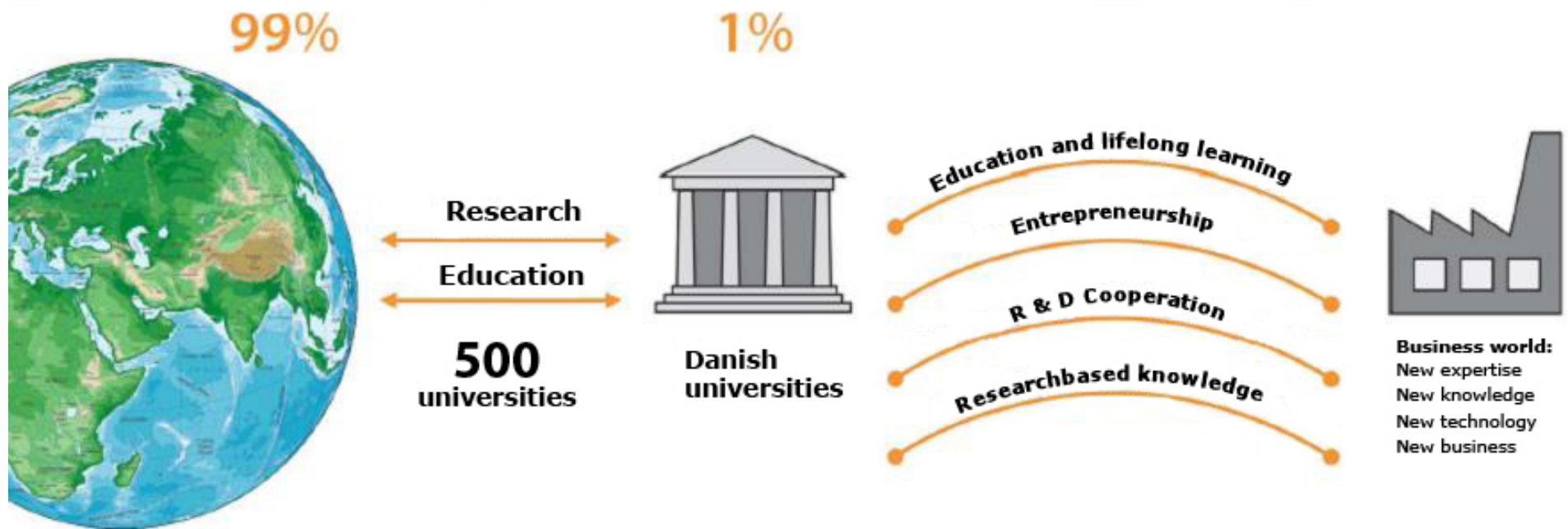
Aalborg University – facts

- Aalborg University has app. 16.000 students, ranging from students at preparatory courses through master-level candidates.
- 12% are international students coming from 100 different countries all over the world.
- The university employs approximately 1800 faculty and 700 administrative and technical staff.
- The educational programmes are organized into the university's 4 faculties and 11 schools.
- Aalborg University has app. 70 programmes taught in English

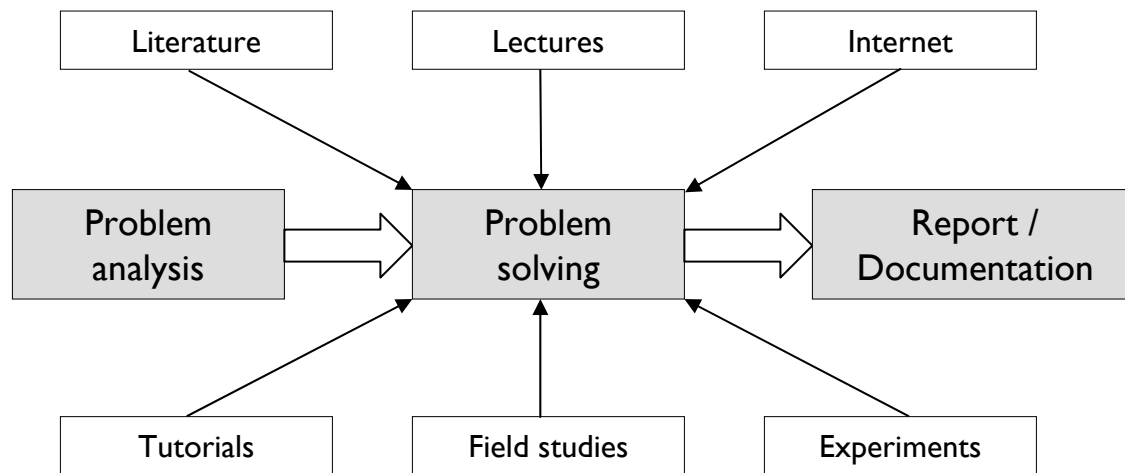
Departments at Aalborg University

- Department of Architecture, Design and Media Technology
- Department of Biotechnology, Chemistry and Environmental Engineering
- Department of Business and Management
- Department of Clinical Medicine
- Department of Civil Engineering
- Department of Communication and Psychology
- Department of Computer Science
- Department of Culture and Global Studies
- Department of Development and Planning
- Department of Electronic Systems
- Department of Energy Technology
- Department of Health Science and Technology
- Department of Law
- Department of Learning and Philosophy
- Department of Mathematical Sciences
- Department of Mechanical and Manufacturing Engineering
- Department of Physics
- Department of Political Science
- Department of Sociology and Social Work

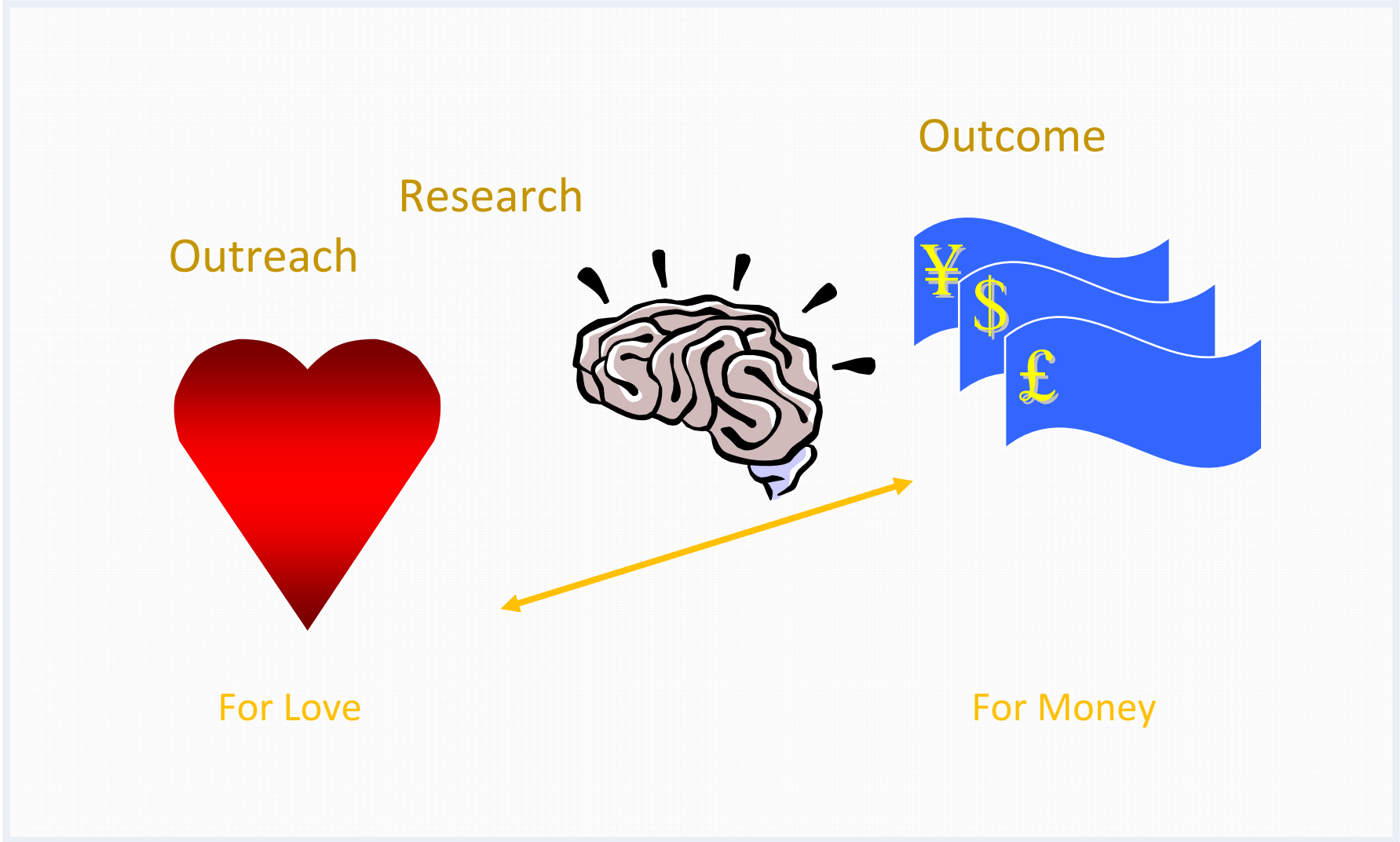
Interaction between university and business/outside world

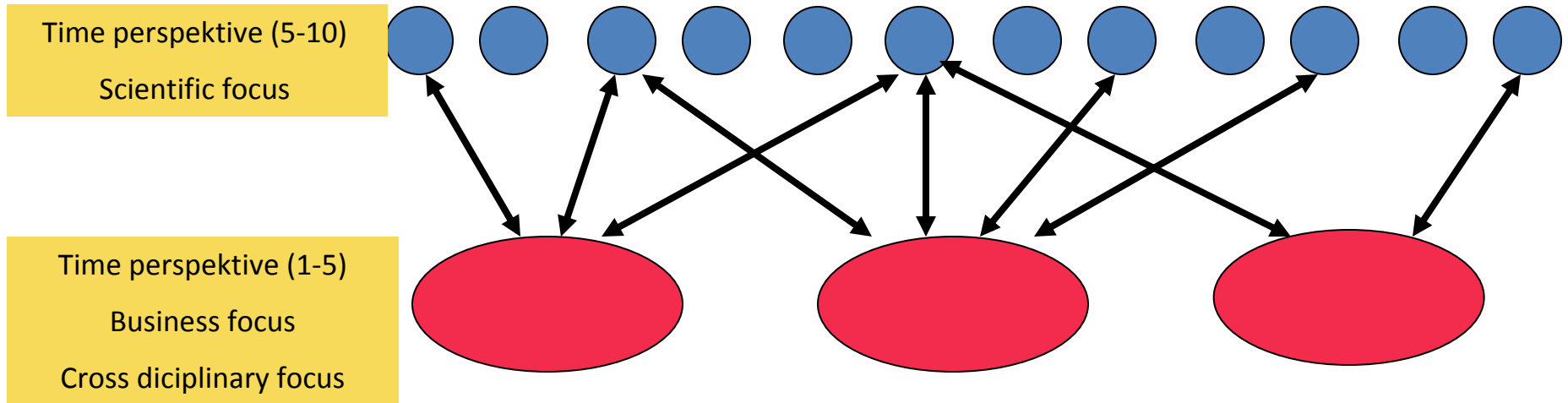


The Aalborg Model : Problem Based Learning (PBL)



Model from *The Aalborg PBL model - Progress, Diversity and Challenges*
Anette Kolmos, Flemming K. Fink & Lone Krogh

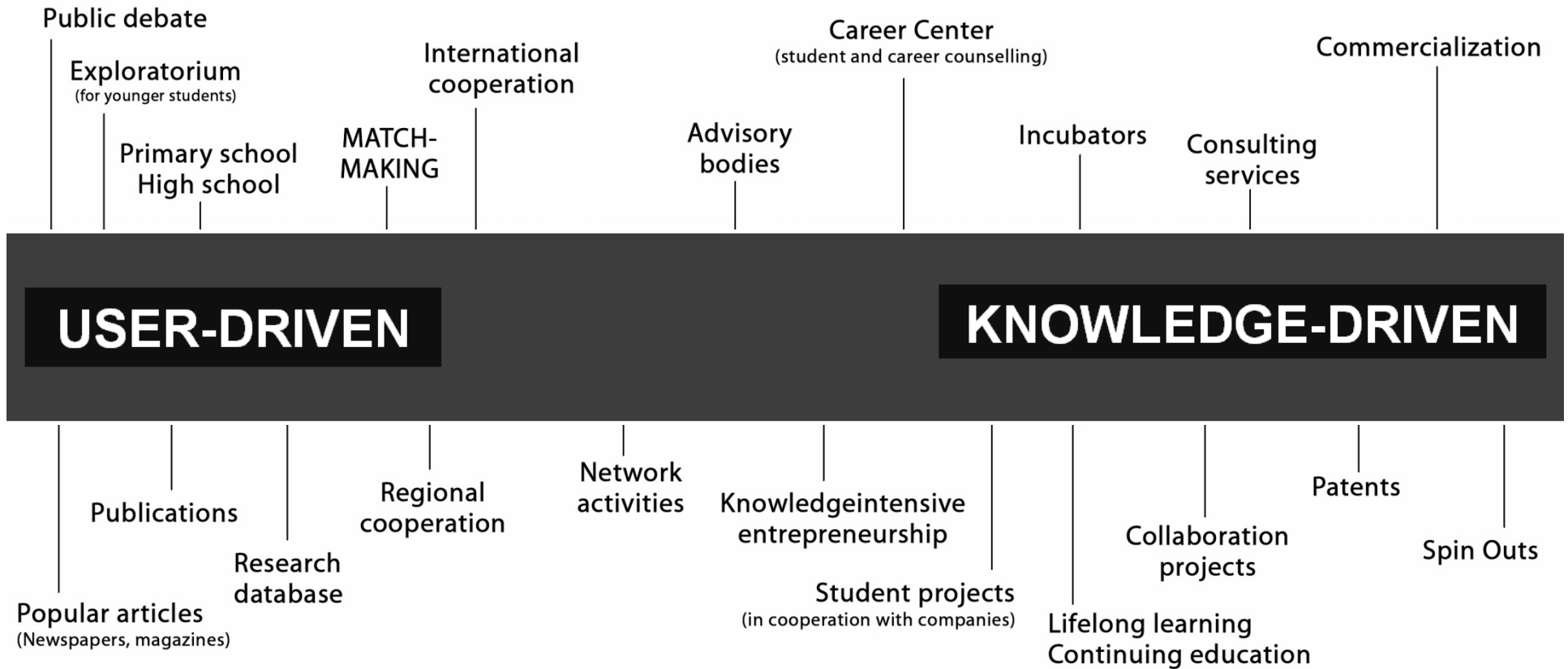




Time perspektive (0-1)
Service focus



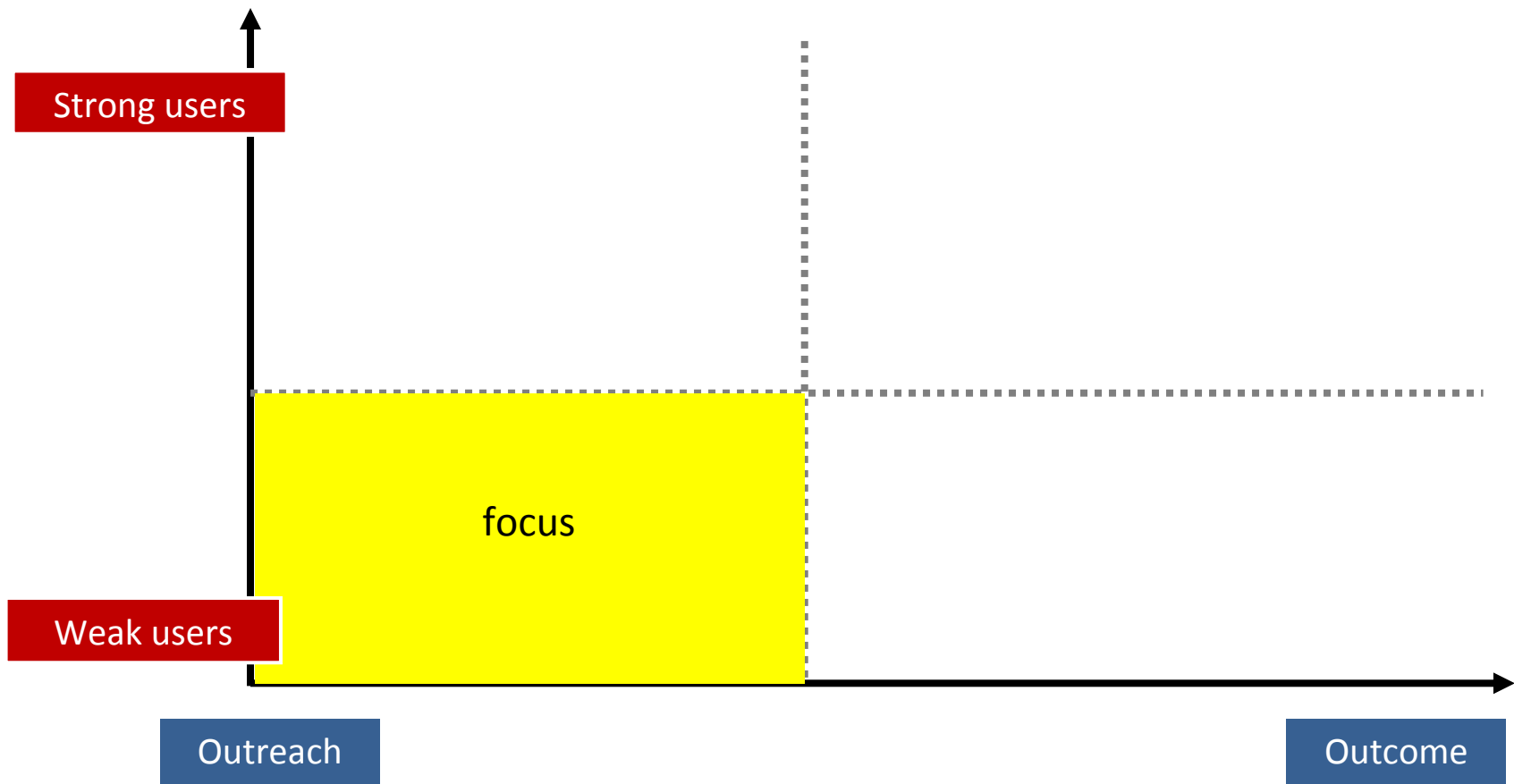
Knowledge interactions AAU – and their users



New initiatives

- Integration (Internal reorganisation)
- Company cooperation 2.0 (External reorganisation)
- New cross disciplinary centres
- Mega projects
- Copenhagen
- Systematic evaluation
- 9220 – Aalborg Harbour
- Smart cities
- New hospital construction
- Further development of triple – helix
- Entrepreneurship (students)
- Student generally

AAU Matchmaking



AAU Matchmaking - Different entrances

- **Internal matchmakers**
Representatives from the different university departments
(Each department is represented by at least one internal matchmaker)
- **External matchmakers**
Representatives from commercial councils or large companies
(Today – 75 external matchmakers)
- **Matchpoints**
Local physical meeting rooms in different municipalities
(Today – 10 matchpoints)

AAU Matchmaking - Possibilities of co-operation

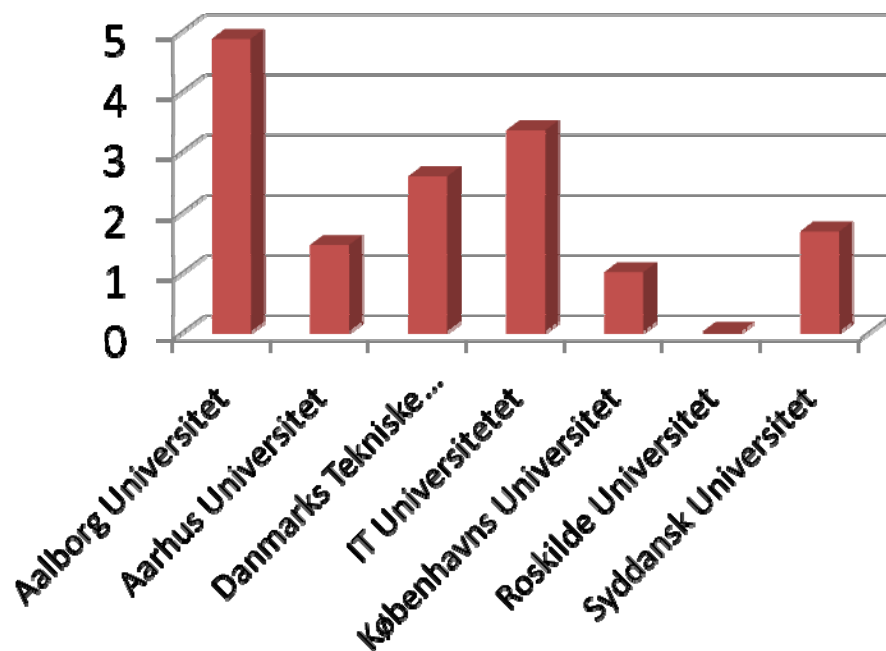
- Network co-operation
- Co-operation with students on projects
- Student jobs
- Trainee-ship
- Access to laboratories
- Consulting services
- Research co-operation (co-financing models, access to equipment etc.)
- Business oriented PhD co-operation
- Continuing Engineering Education etc.
- Entrepreneurship
- Etc.

Results

- Co production of articles
- BrainsBusiness ICT North Denmark (added value)
- Innovations networks
- Cooperation agreements
- ICT research analyses
- Reg Lab
- IPR handling

Vidensdrevet innovation

Indberettede opfindelser fra institutionens forskere i 2009 i forhold til forskningsbudget

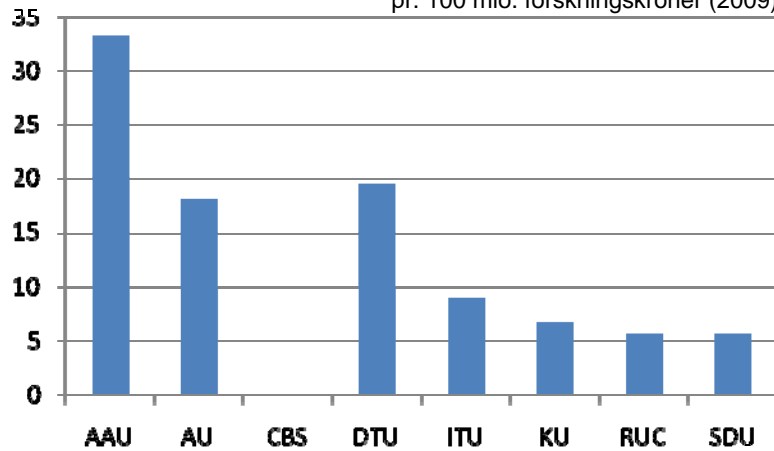


Kommercielle resultater i forhold til indberetninger

	MIT	AAU
Licens, options and sales agreements	20%	50%
Spin-outs	5%	8%

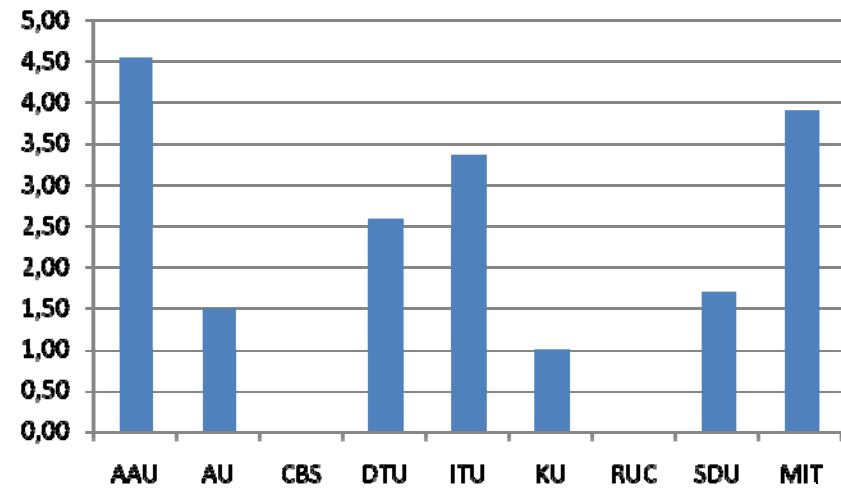
Samarbejdsaftaler med private virksomheder

pr. 100 mio. forskningskroner (2009)



Indberettede opfindelser

pr. 100 mio. forskningskroner (2009)



Gennemsnitligt antal indberetninger i 2008

EU	DK	AAU
19.9	22.8	42

Contact:
Niels Maarbjerg Olesen
nmo@adm.aau.dk