



# Why are there 72 inhabited places in Greenland?

A Greenlandic perspective on vulnerability in Norden

Hela Norden Ska Leva  
Nordregio, Stockholm  
25 November 2016

Klaus Georg Hansen  
Department of Finance, Government of Greenland



# The short answer is ... for political reasons!

Greenland got a new government on 27 October 2016.  
It is less than one month ago.

In the political agreement between three political parties representing 80 % of the seats in the parliament it says:

The small settlements are the traditional location for our food supply.  
The small settlements are an important part of the Greenland society.  
The small Settlements are keeping the vast country together.

There must be established local councils in the small settlements.  
There must be established a ministry for the small settlements.

The agreement does not explicitly say that no small settlement can be closed,  
but it is considered political suicide to hold an opinion like that.

... unfortunately, there is a little bit more to the answer than just this here ...





# Map of Greenland ... and the rest of Norden



## Greenland

4,000 years ago the first people  
1,000 years ago the first Europeans

Part of The Kingdom of Denmark

Population of 56,000 people  
72 inhabited places

Nationalities:

Danish: 98.1 %

    Born in Greenland: 90.9 %

    Born outside of Gr.: 7.2 %

Iceland: 0.4 %

Thailand: 0.3 %

Philippines: 0.3 %

Three Inuit groups:

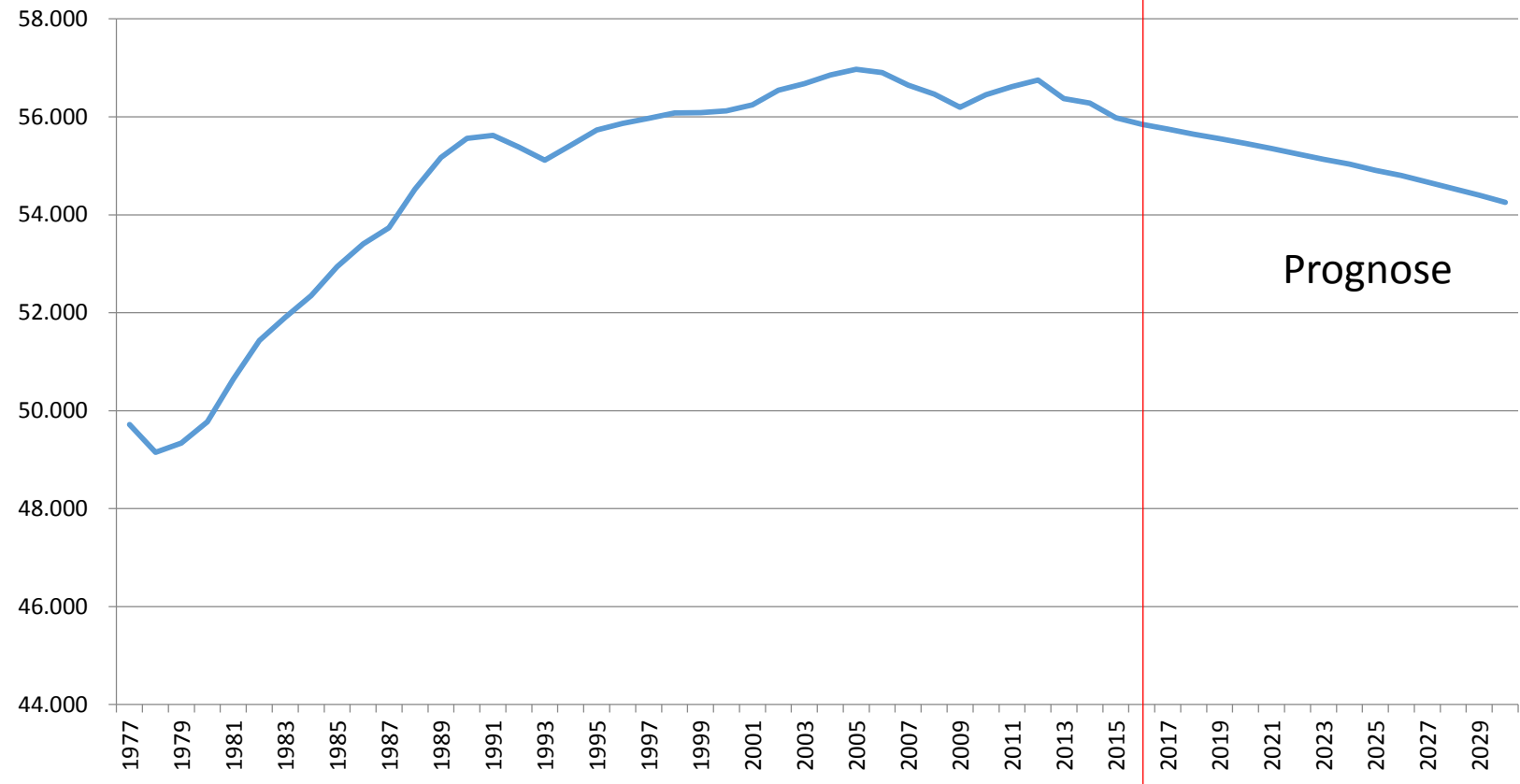
Thule Greenlanders   1.5 %

East Greenlanders   6.0 %

West Greenlanders   92.5 %

# Demographic development

## The population in Greenland 1977-2029

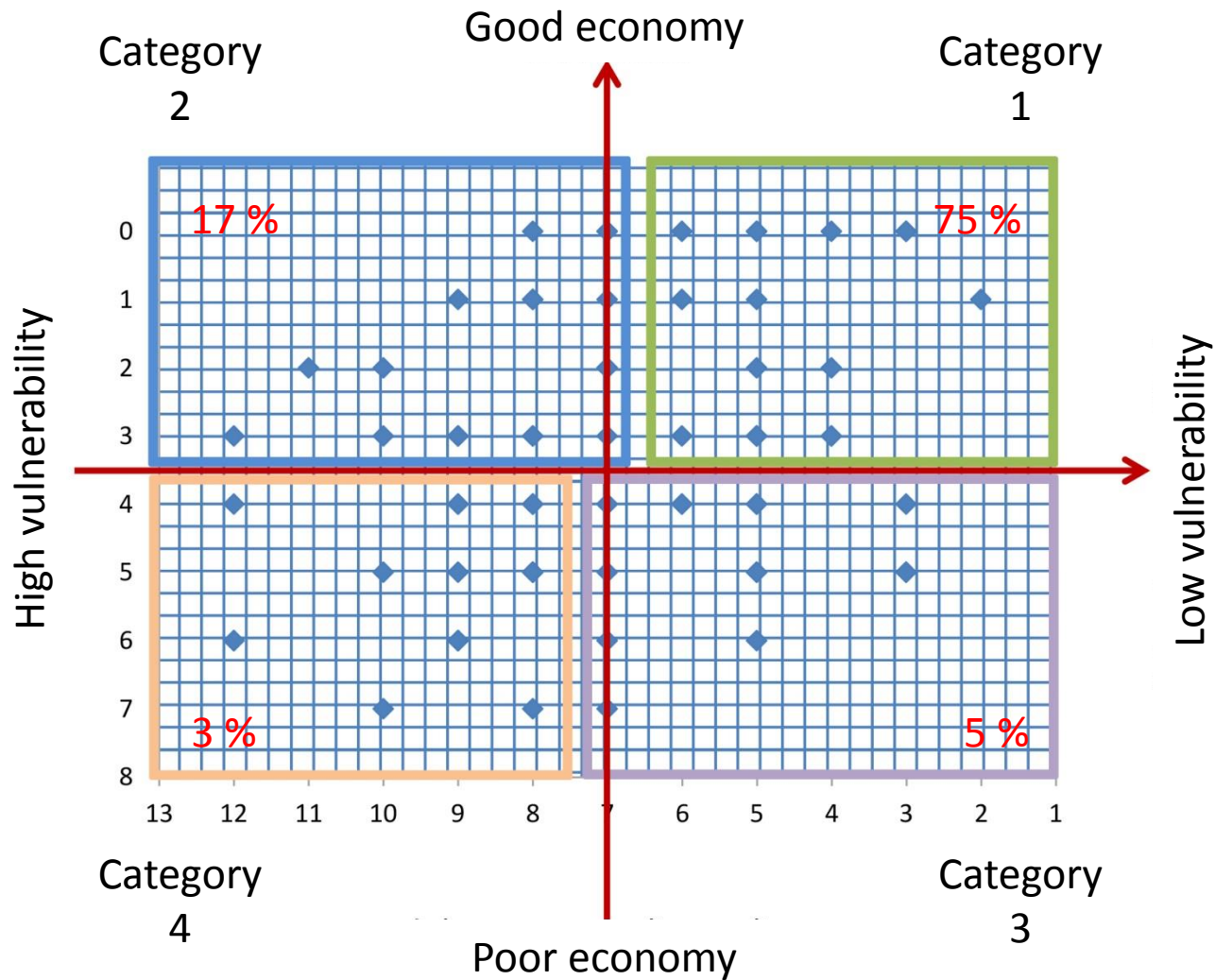


## Settlements

Size	1977	2016
>6.000	17,2 %	31,0 %
3.000-5.999	21,4 %	29,0 %
1.000-2.999	32,2 %	21,9 %
<1.000	29,2 %	18,1 %

Amount	1977	2016
>6.000	1	1
3.000-5.999	3	4
1.000-2.999	9	8
<1.000	110	68

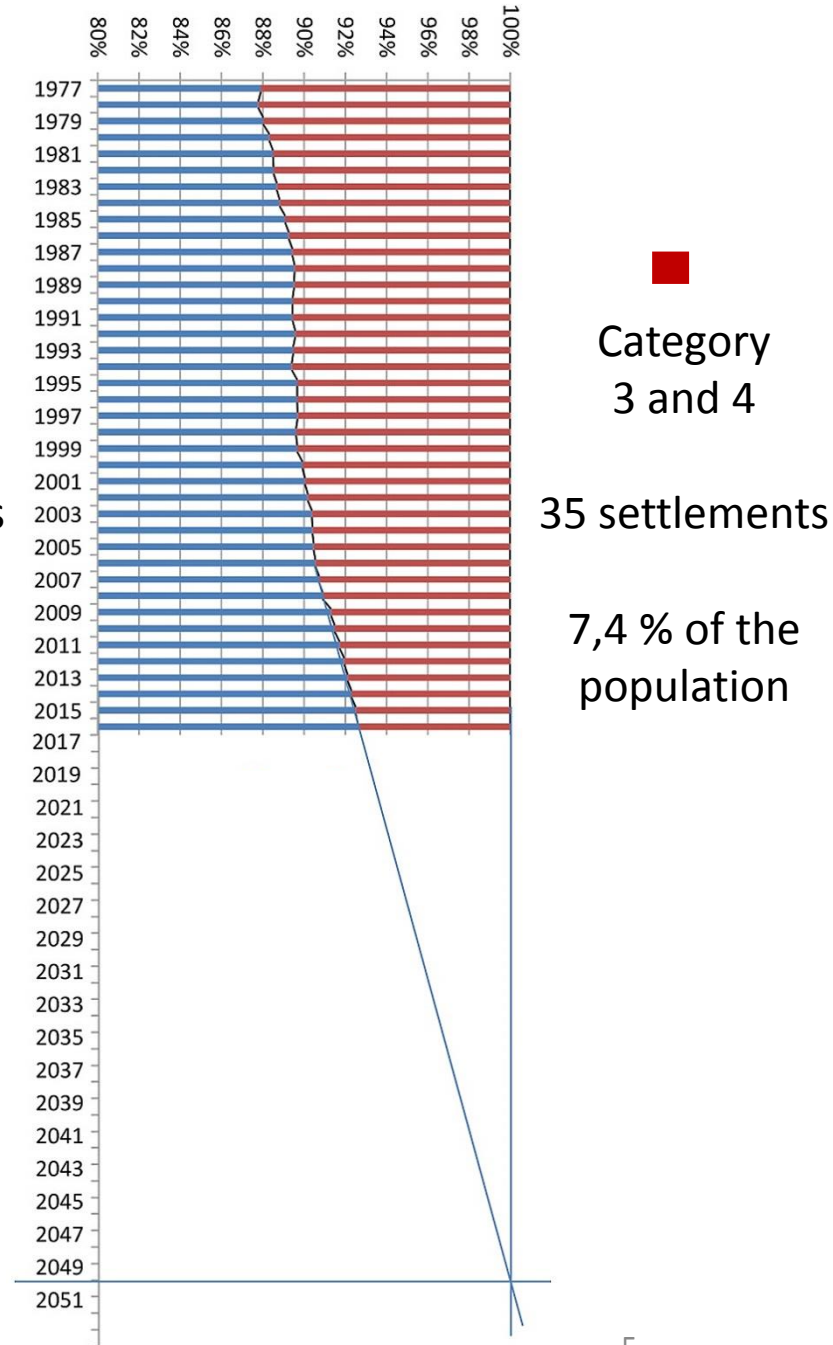
# Demographic development



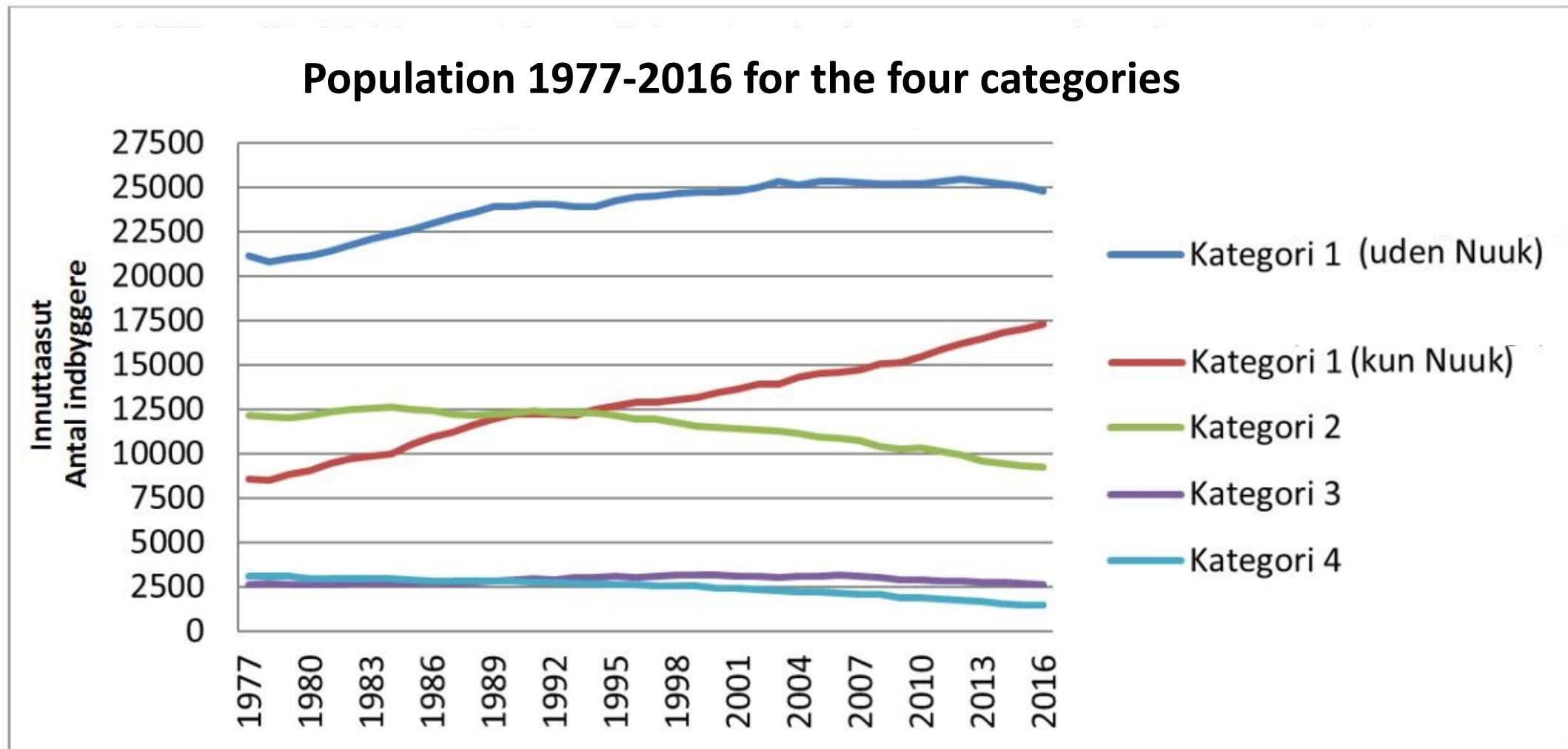
■ Category 1 and 2

37 settlements

92,6 % of the population

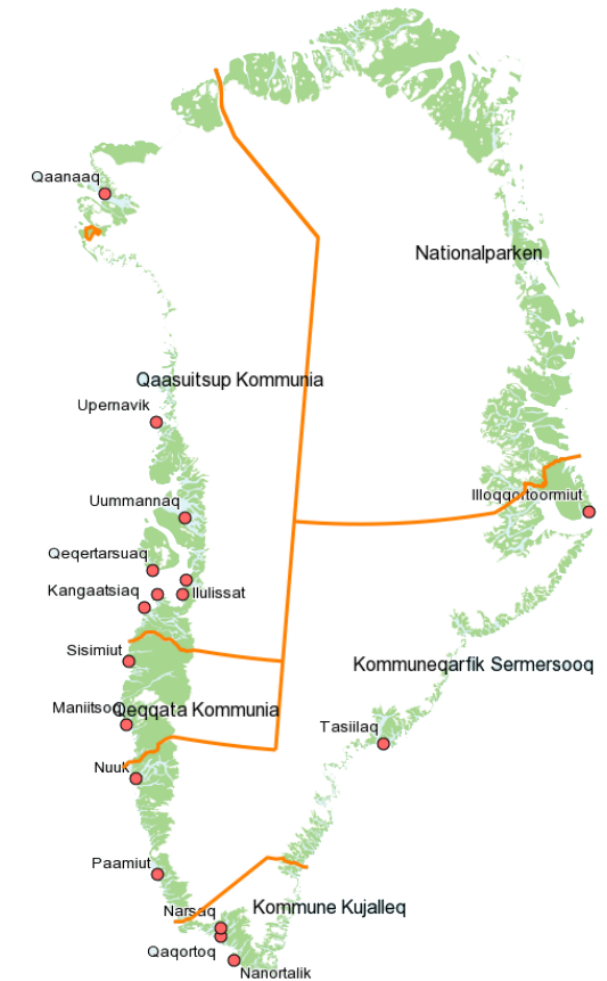
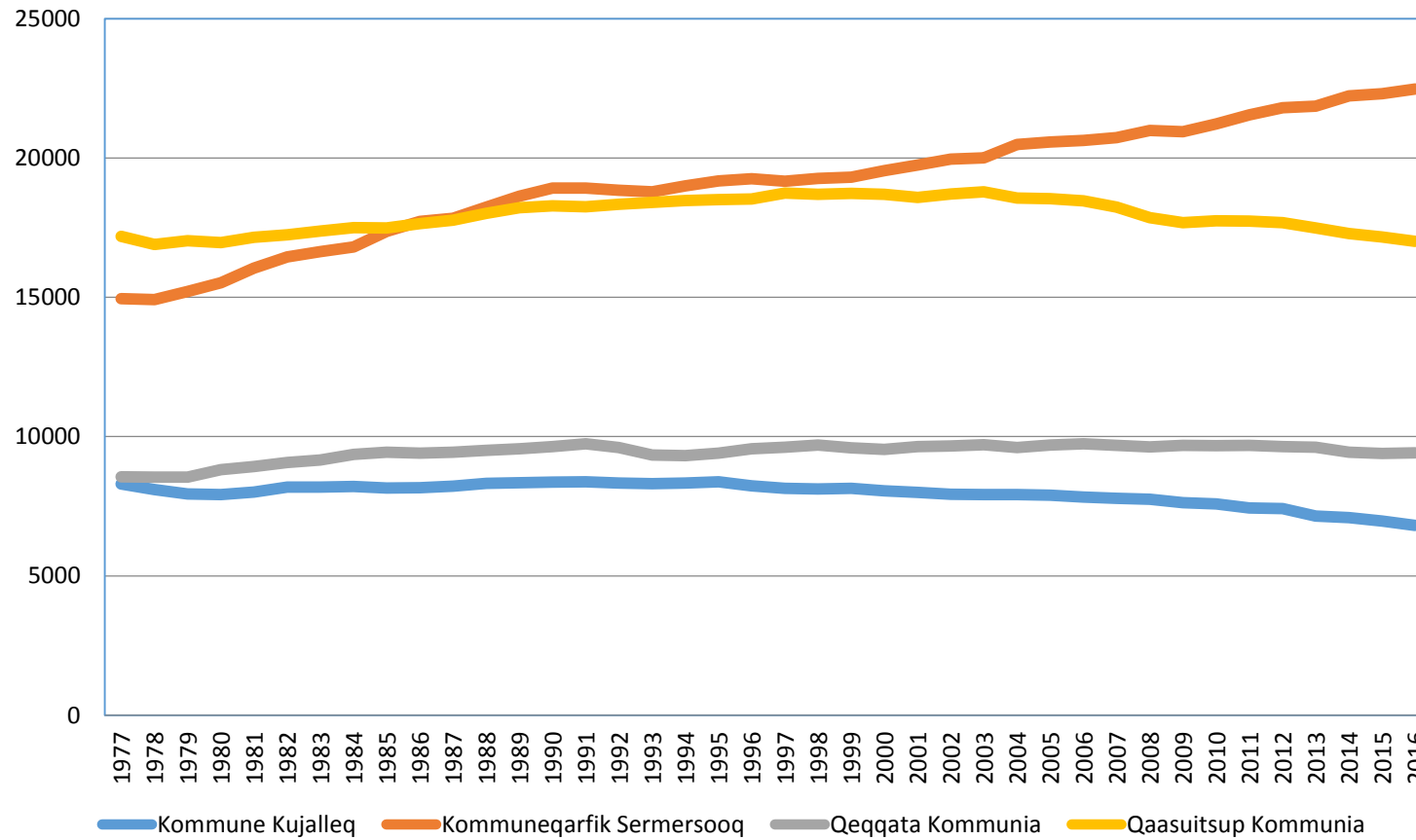


# Demographic development – the four categories



# Demographic development – the four municipalities

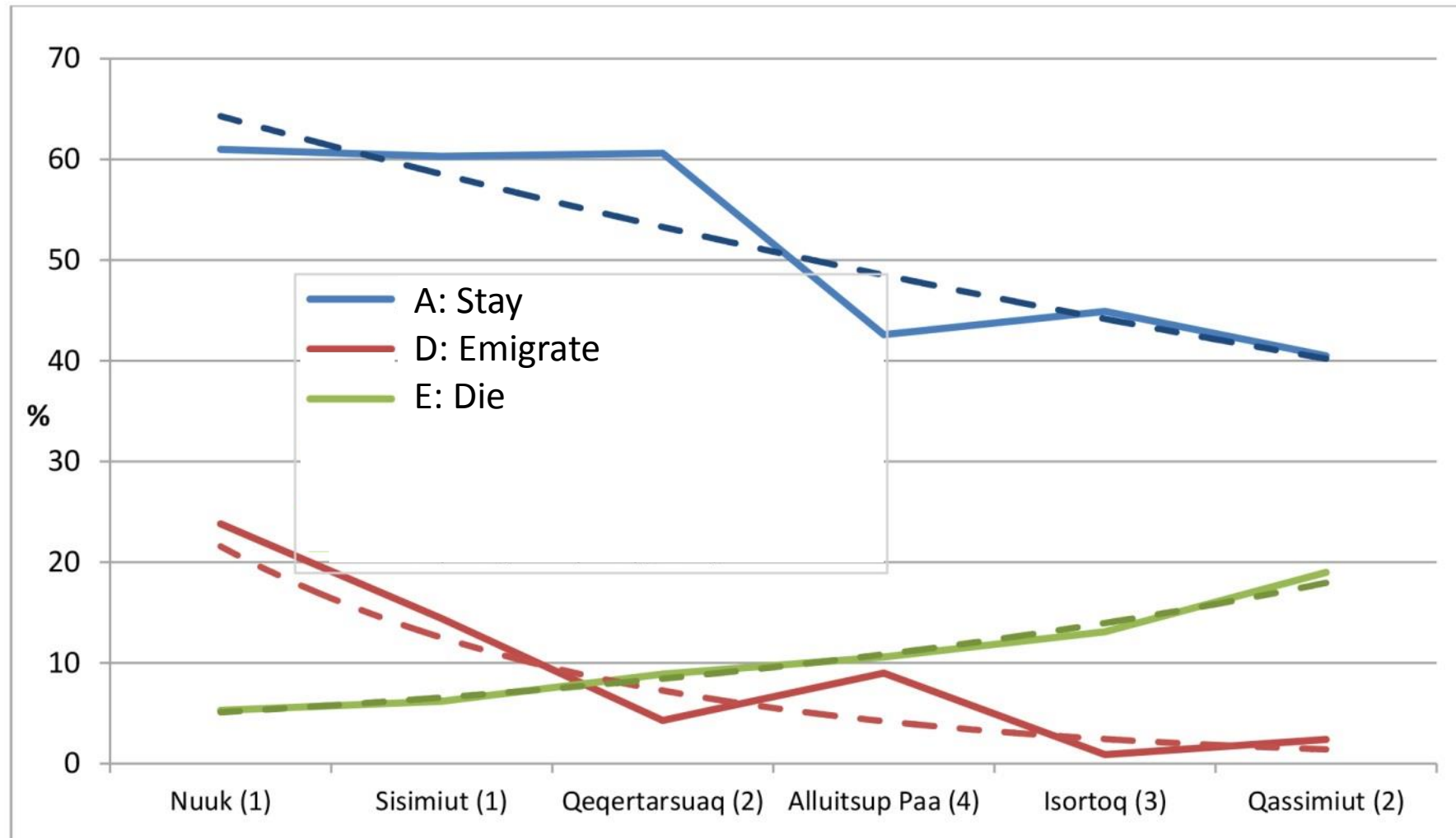
## Population in the four municipalities 1977-2016





# Demographic development – size matters

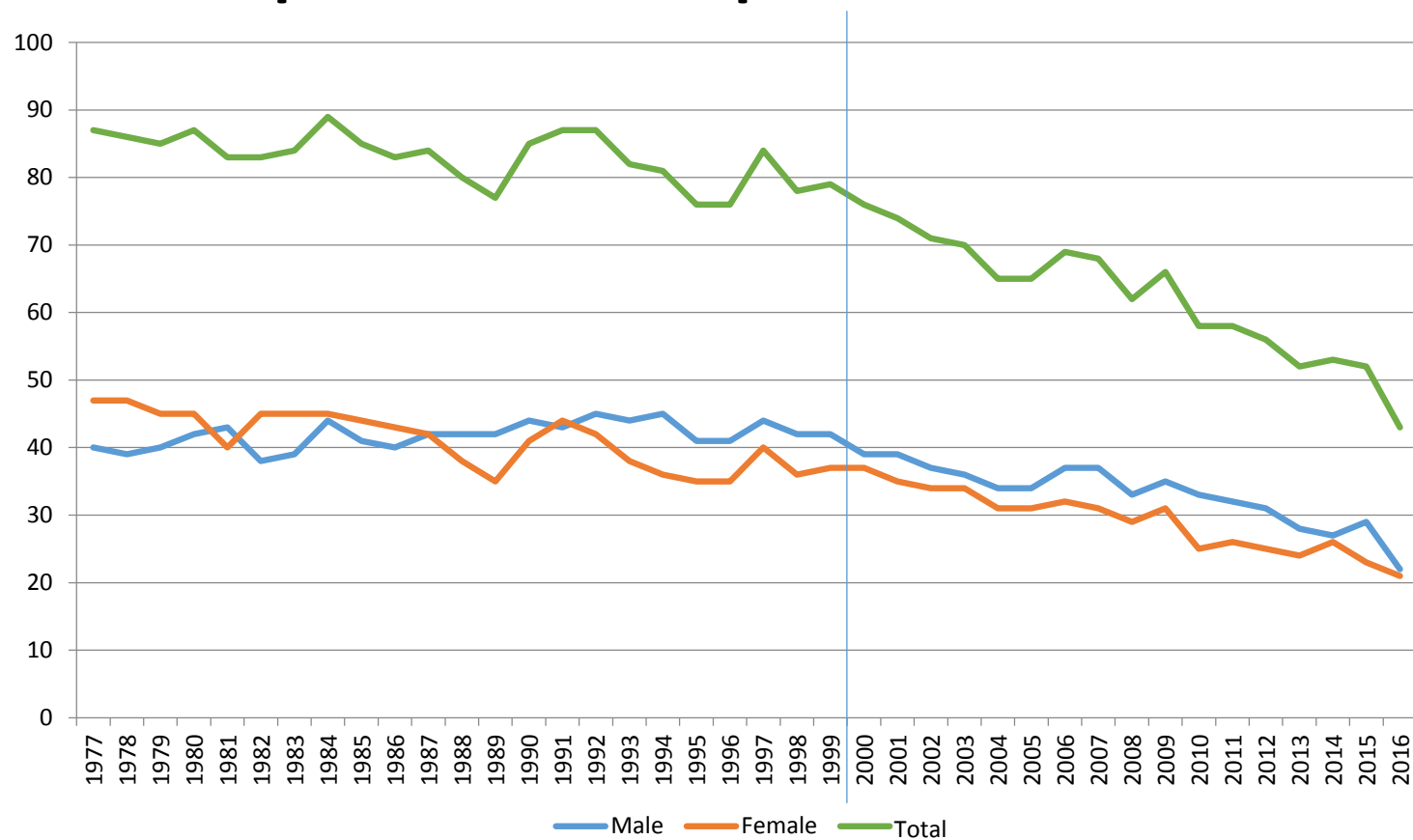
## Demographic change 2006-2015



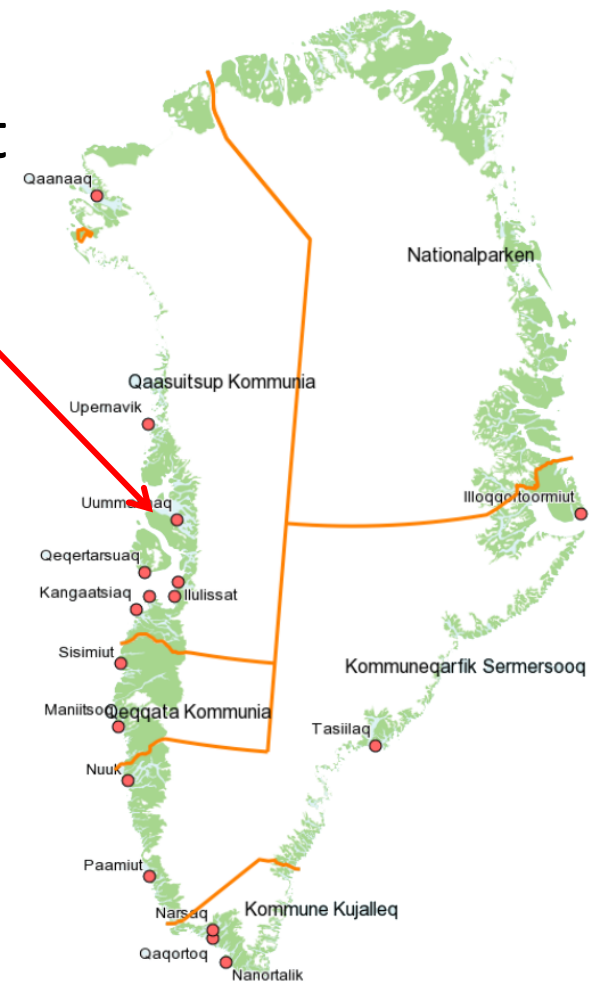


# Demographic development – one example

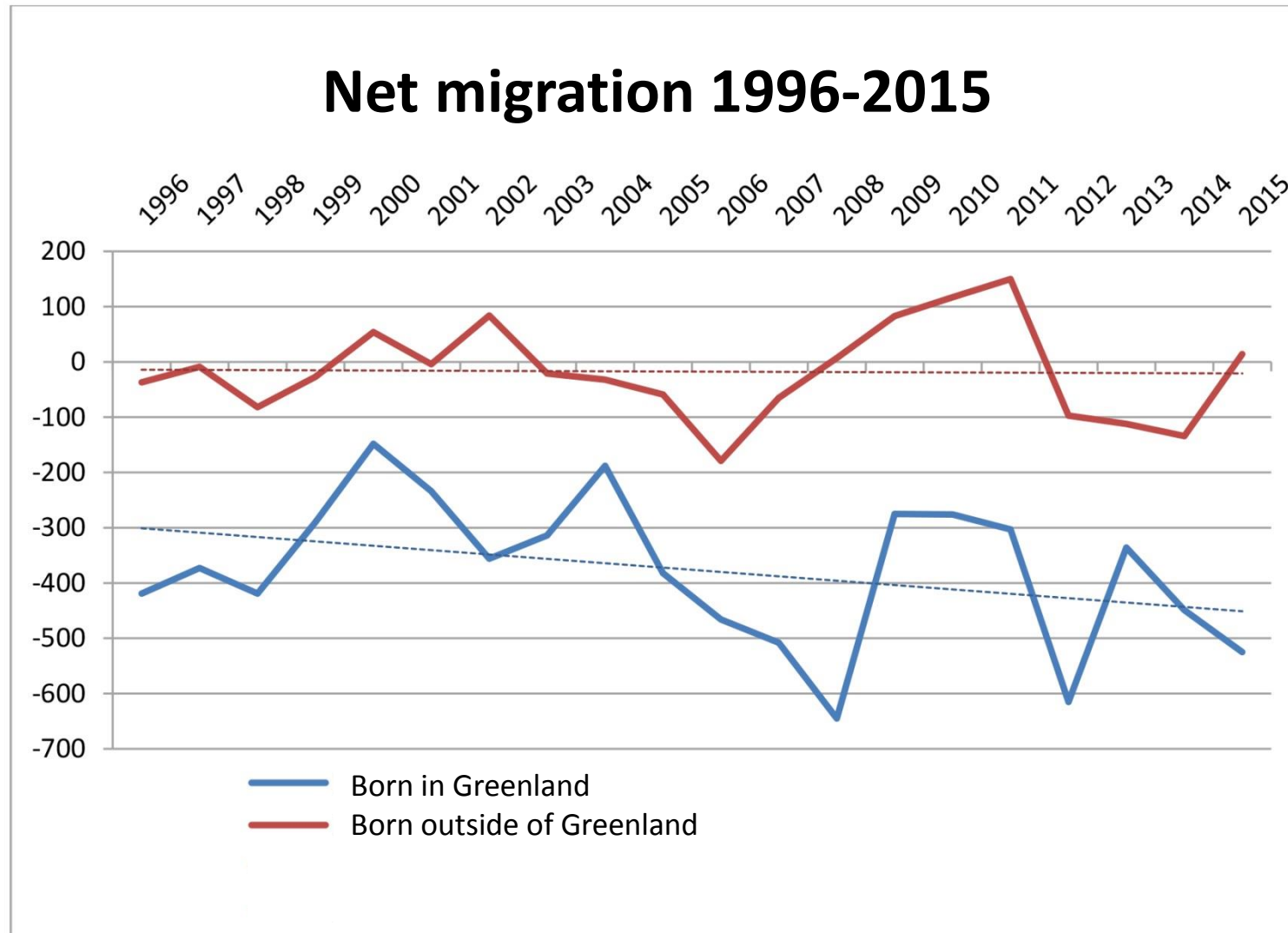
## Population in Niaqornat 1977-2016



## Niaqornat



# Demographic development – what's next?



Greenland gets no refugees. Most of the immigrants are Danish citizens.

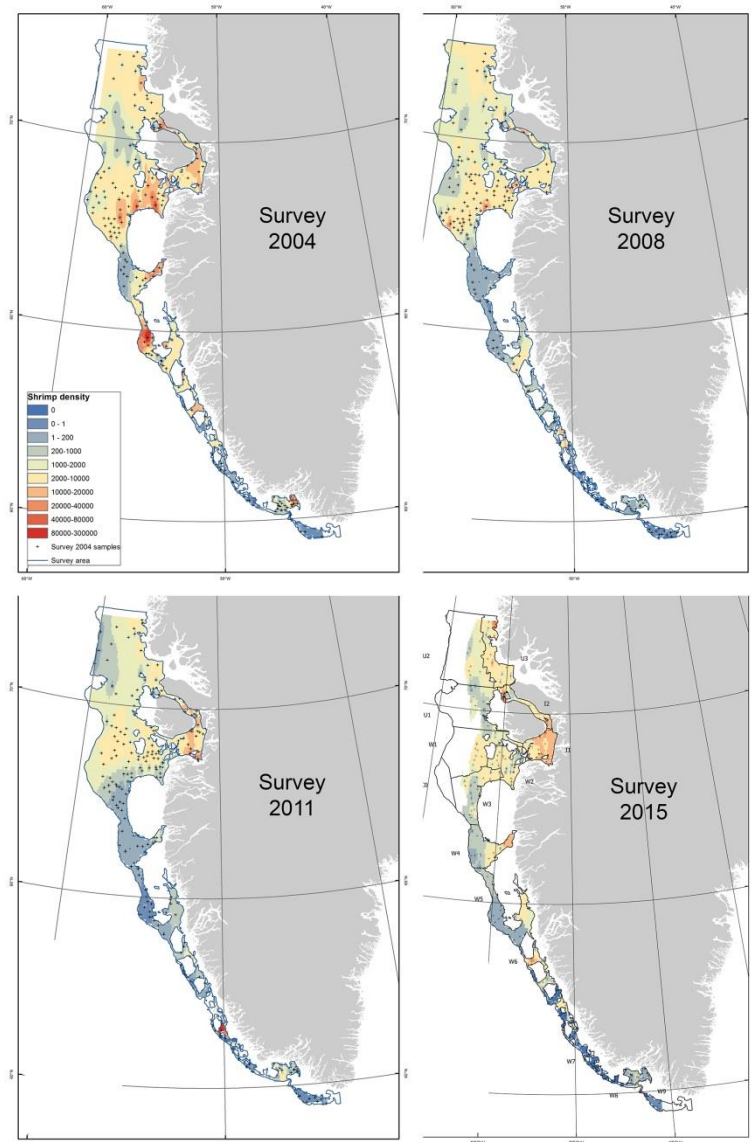
Net migration of people of foreign nationality almost zero.

The largest challenge is the outmigration of a growing number of people born in Greenland.

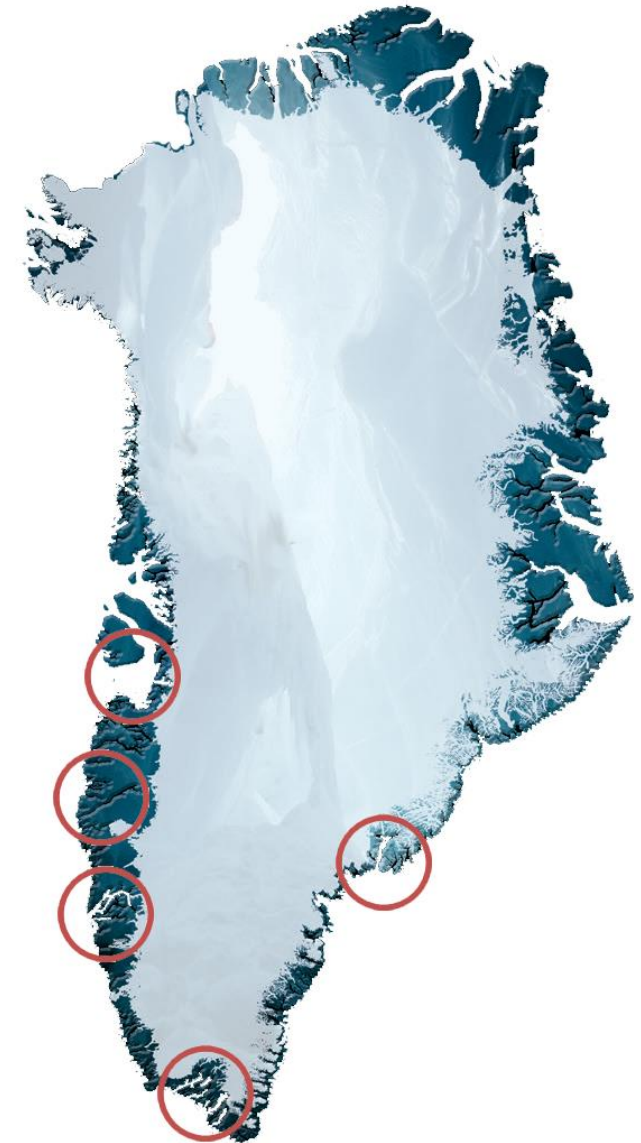
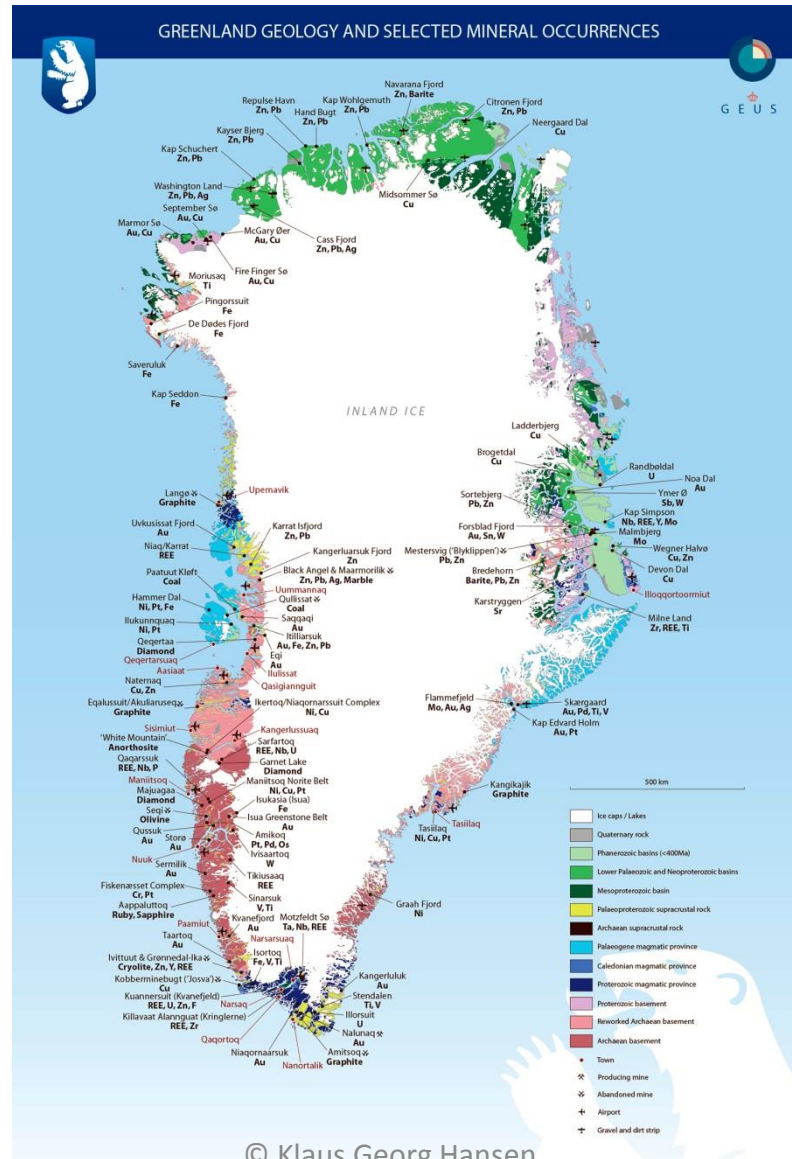
A large survey of reasons for people to move and migrate will be conducted in the first part of 2017. The mobility pattern for the Greenlandic youth will be one of the focus areas.

Greenlanders in Denmark will be included in the survey.

# Infrastructure – and the place based economy

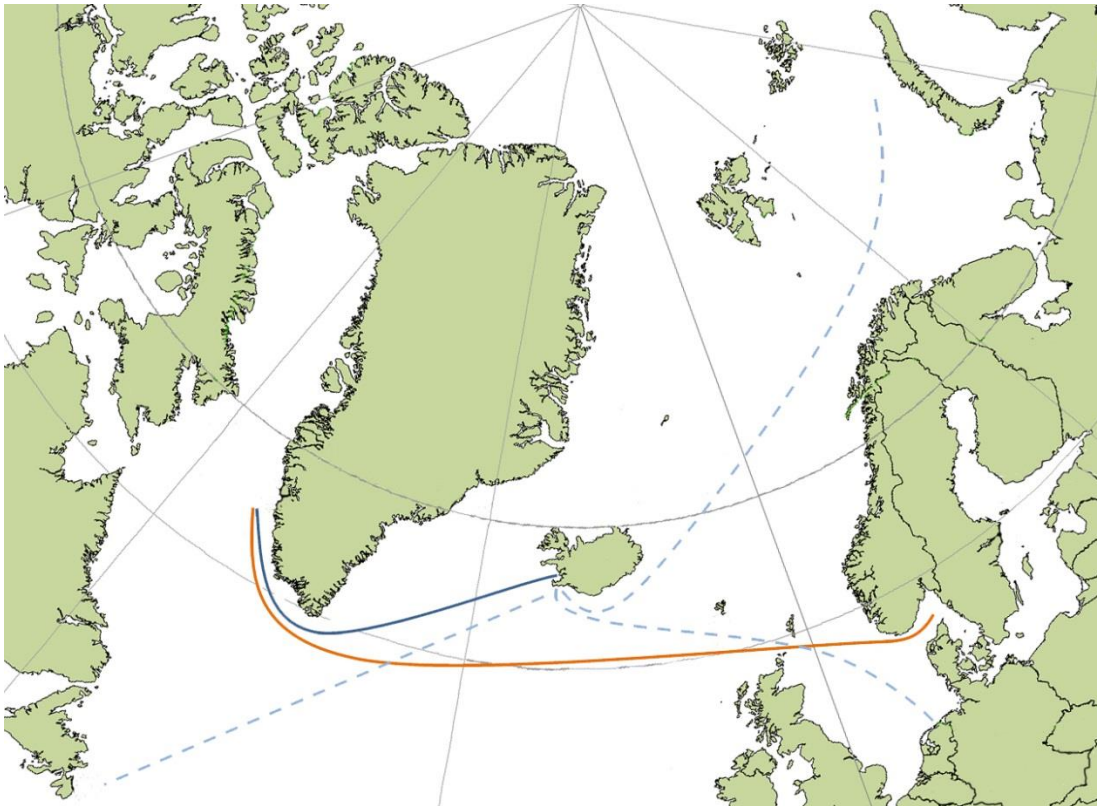


Nordregio, 25 November 2016





# Infrastructure – sea transport



Royal Arctic Line's strategy is to connect Greenland to the global sea transport network system.

This is the first change in the sea transport structure which was established in the beginning of the colonial period.



# Infrastructure – tele communication



© Klaus Georg Hansen



The extension of the sea cable to the Disco Bay will take place in 2017.

This will give 2/3 of the population access to high speed internet connection.

# Infrastructure – airports

Mittarfeqarfeqarneq 2016 (takissusia)	Innuttaasut (2016-mi kisitsisit)	Mittarfeqarfiup qanoq ittuunera	Innuttaasut (2016-mi kisitsisit)	Mittarfeqarfissatut pilersaarut (takissusia)
Lufthavnsstruktur 2016 (banelængde)	Indbyggere (2016 tal)	Lufthavnstype	Indbyggere (2016 tal)	Lufthavnsstruktur planlagt (banelængde)
Kangerlussuaq (2.815) Narsarsuaq (1.830)	615 1,1 % <b>1A</b>	<b>Nunat tamat akornanni mittarfik</b>  <b>Interkontinental lufthavn</b>	22.373 40,3 % <b>1B</b>	Ilulissat (2.200) Nuuk (2.200) Kangerlussuaq (ca. 2.200) Narsarsuaq (1.830)
Ilulissat (845) Nuuk (950) Kulusuk (1.199 grus) Nerlerit Inaat (1000 grus)	22.010 39,4 % <b>2A</b>	<b>Nunani Avannarlerni mittarfik</b>  <b>Nordatlantisk lufthavn</b>	5.107 9,2 % <b>2B</b>	Qaqortoq (1.500) Tasiilaq (1.500)
Qaanaaq (900 grus) Upernavik (799) Qaarsut (900 grus) Aasiaat (799) Sisimiut (799) Maniitsoq (799) Paamiut (799)	14.563 26,1 % <b>3A</b>	<b>Sumiiffimmi mittarfik</b>  <b>Regional lufthavn</b>	23.702 39,0 % <b>3B</b>	Qaanaaq (900 grus) Upernavik (799) Uummannaq (650 grus) Qaarsut (900 grus) Qeqertarsuaq (650 grus) Qasigiannguut (650 grus) Aasiaat (799) Kangaatsiaq (650 grus) Sisimiut (799) Maniitsoq (799) Paamiut (799) Narsaq (650 grus) Nanortalik (650 grus) Alluitsup Paa (650 grus) Kulusuk (1.199 grus) Ittoqqortoormiit (650 grus)
60-t missaat  Ca. 60 steder	18.659 33,4 % <b>4A</b>	<b>Qulimiguulinnut mittarfilik</b>  <b>Lokal heliport eller helipad</b>	4.665 11,5 % <b>4B</b>	50-t missaat  Ca. 50 steder

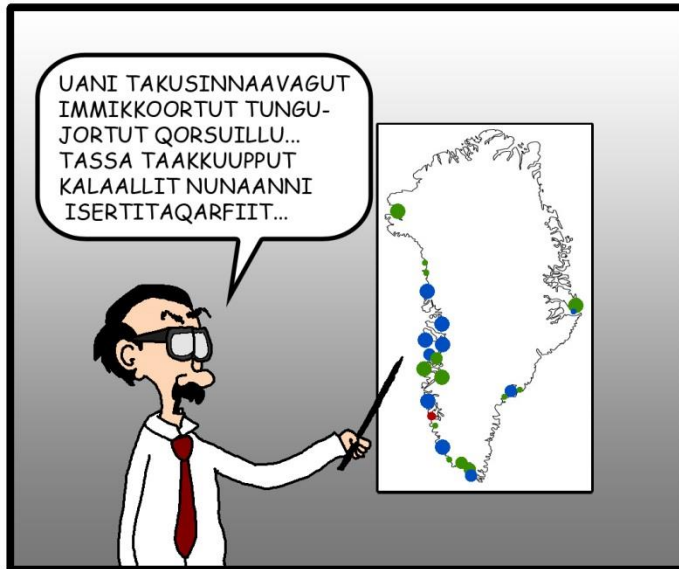


In December 2015 a political agreement defined a set of goals for the development of the air traffic infrastructure over the coming 10 years.

The agreement acknowledges that the plans will be changed if the needed financing can not be provided.

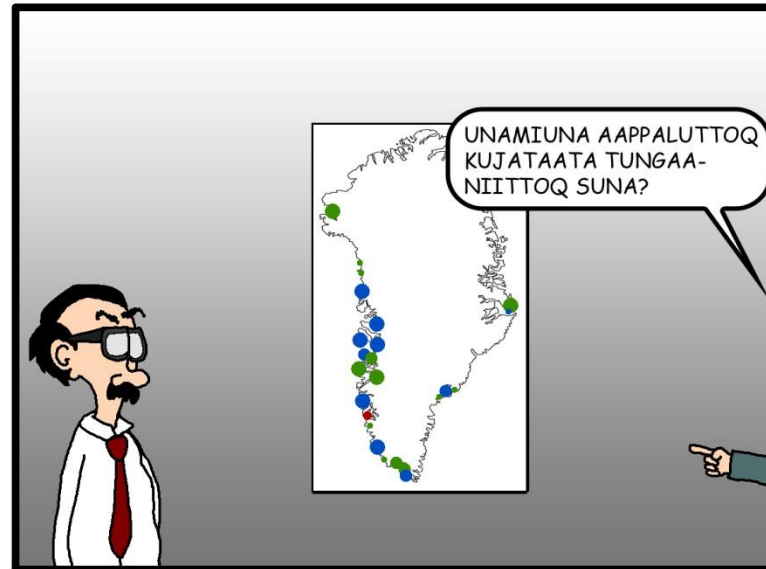
# Economy ... one of the major challenges

The economy ... as it is seen by many citizens outside of Nuuk



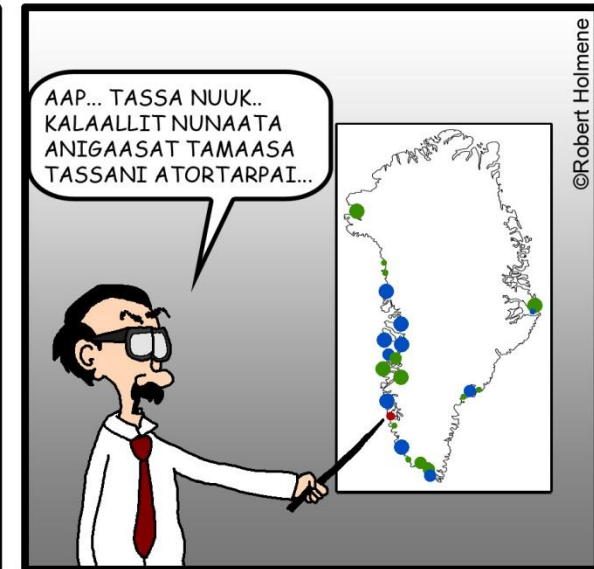
OG HER SER VI ALLE DE BLÅ OG GRØNNE OMRÅDER...  
DET ER DER HVOR GRØNLAND TJENER PENGE...

And we see all the blue and green areas ...  
That is where Greenland earns money ...



HVAD MED DET LILLE RØDE OMRÅDE  
DER, EN ANELSE MOD SYD?

What is the little red area ...  
there, a little bit to the south?

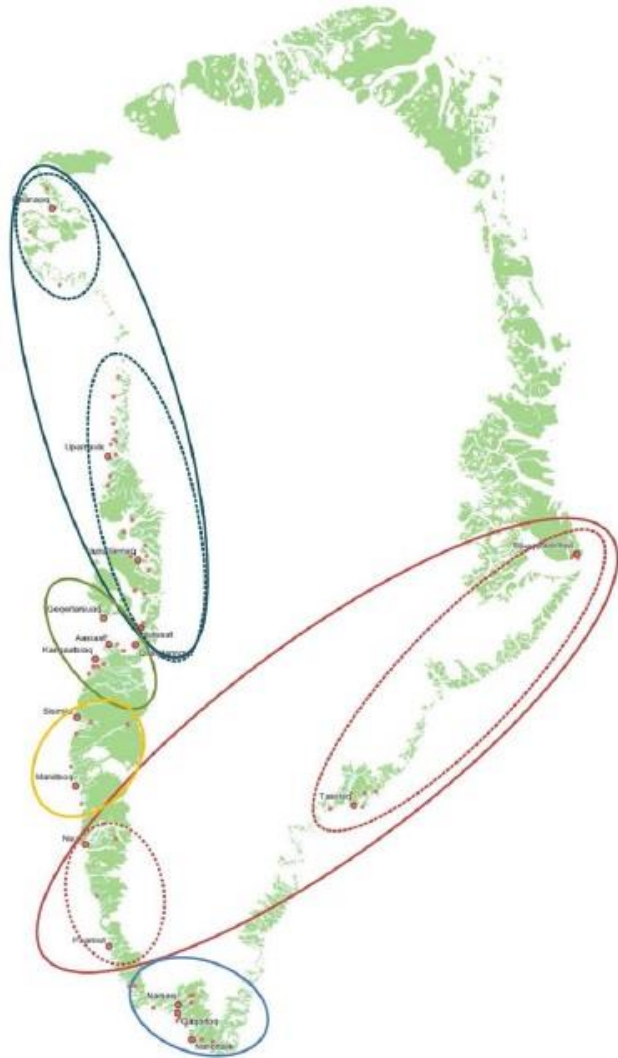


JÅ... DET ER NUUK... DET ER DER  
GRØNLAND BRUGER ALLE PENGENE...

Well ... that is Nuuk ... That is where  
Greenland spends all its money ...

©Robert Holmene

# Five municipalities from 2018 – five regions





Thank you

