

The peri-urban future of Gothenburg

Fighting segregation by sustainable local development




Peter Rundkvist
Business Region Göteborg AB (BRG)
City council of Gothenburg
Sweden





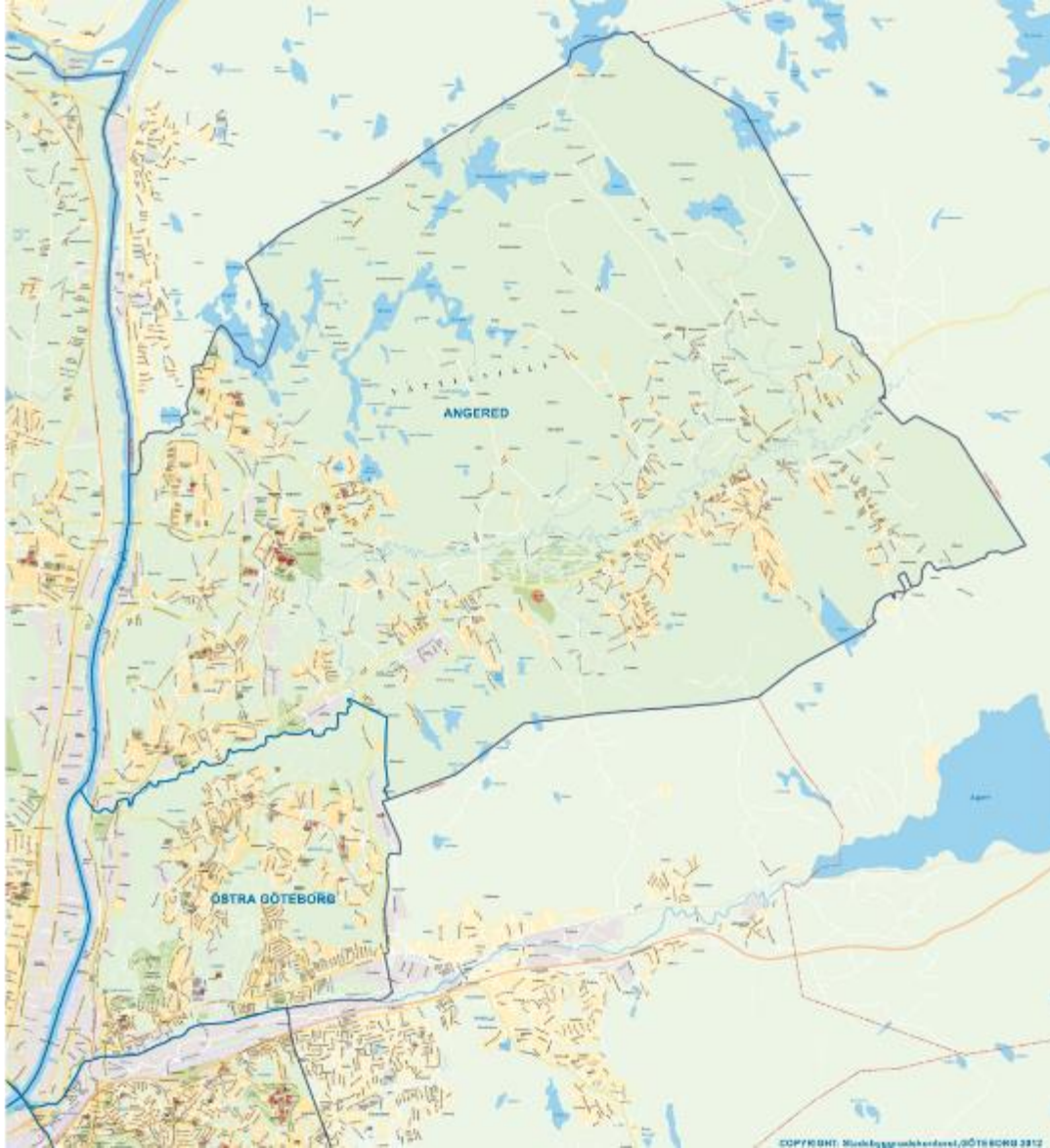
Gothenburg,
Sweden

An aerial photograph showing a dense forest of green trees. A river mouth is visible in the center, with a small cluster of white buildings nearby. The surrounding area is a complex archipelago of islands and waterways. The water is a deep blue color.

Gothenburg,
with the Göta Älv river mouth
and archipelago



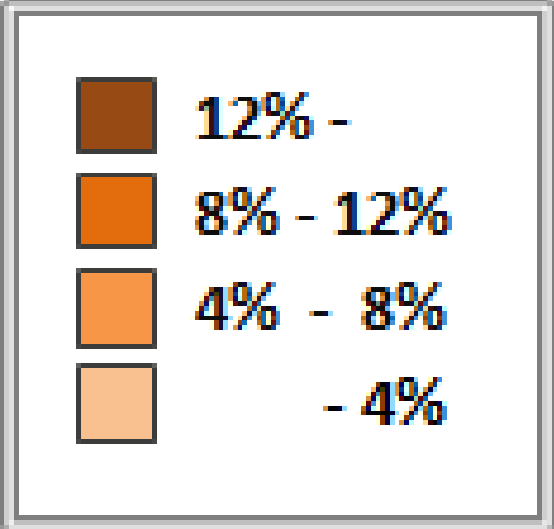
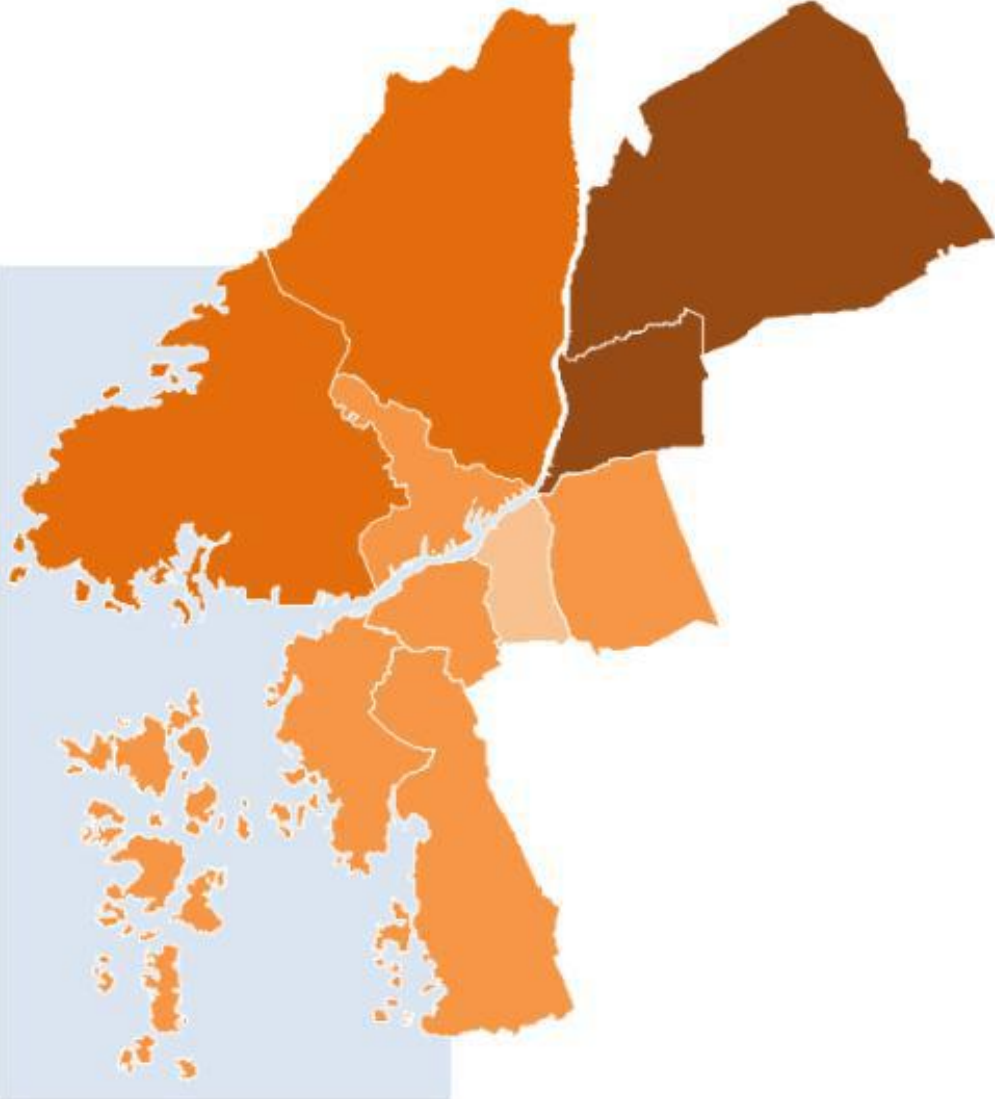
The district of Angered in north east Gothenburg: A "city farmland" in between everything...



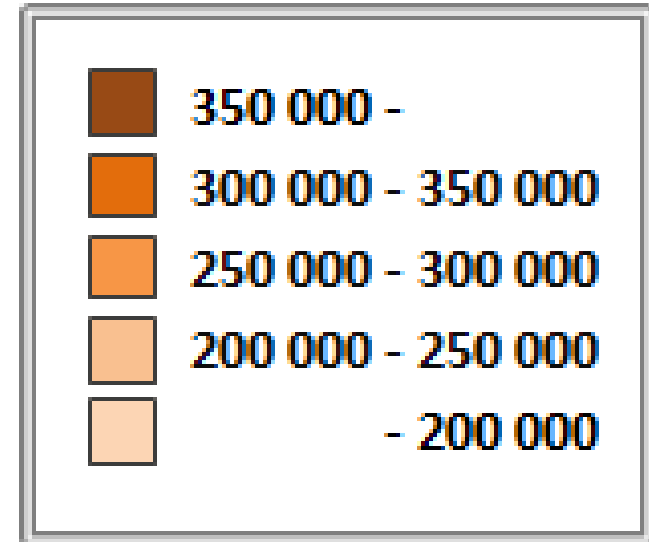
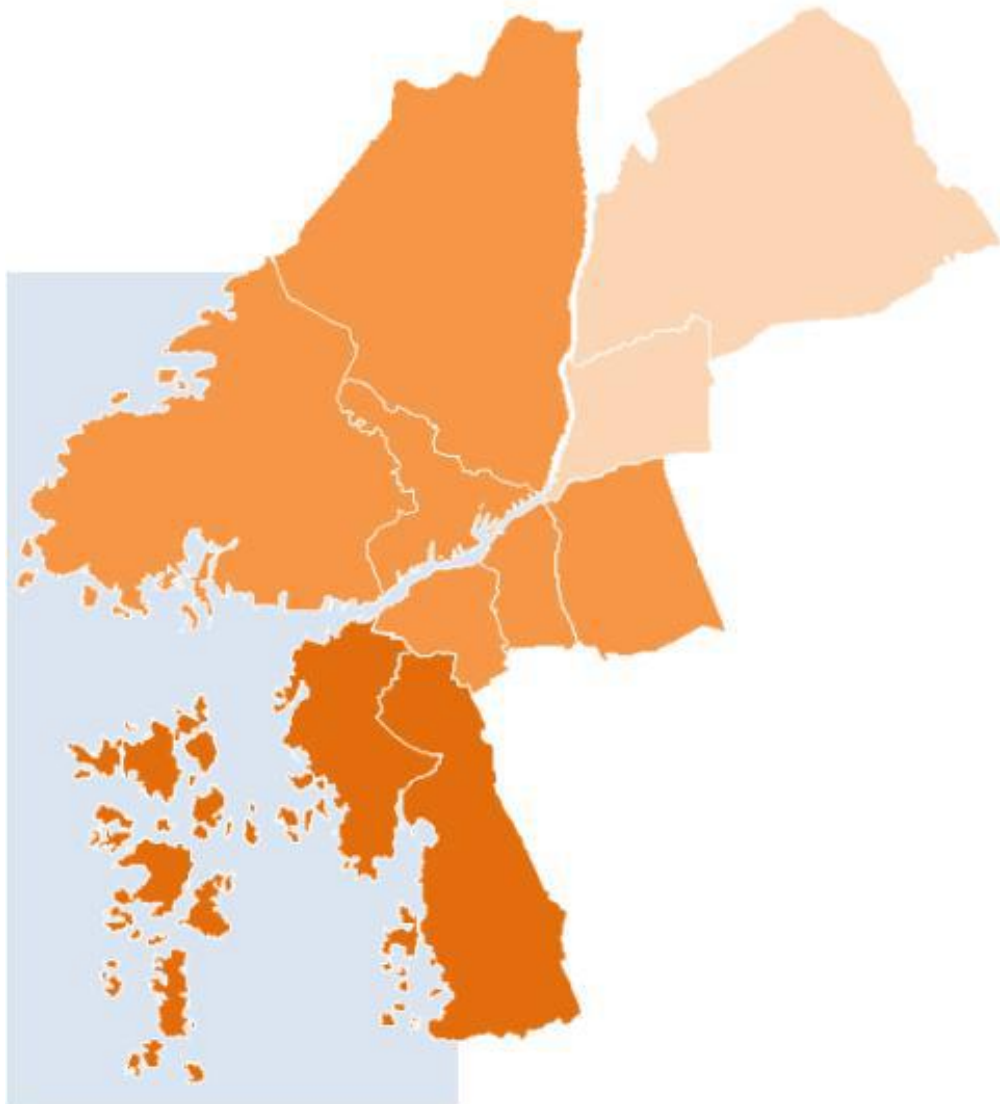
- The municipality of Angered was incorporated into the city in the mid 1960s
- 1/4 of the Gothenburg area - 97 km² (37 square miles)
- 1/10 of the Gothenburg population - 50 000 people
- 12,2 km from the city center (7 miles)



Youth unemployment



Average income

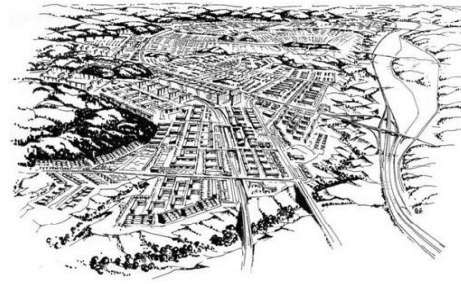




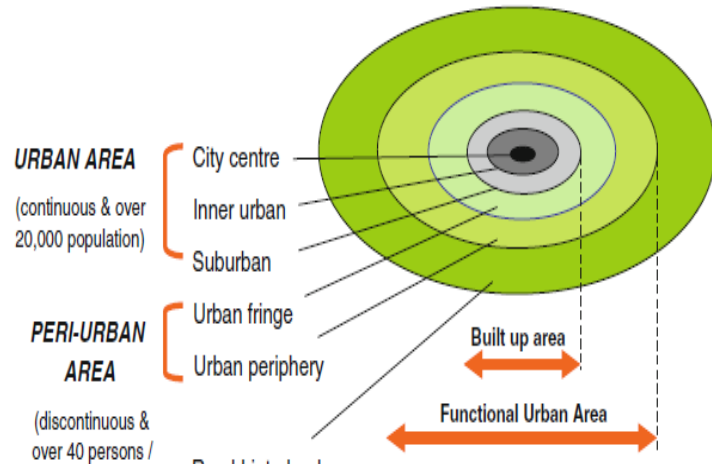
“In north-eastern Gothenburg there are many people with knowledge and experience of green industries. It also has vast natural resources owned by the city, while demand for locally produced, organic food is increasing rapidly. The city must therefore develop the use of land resources, along with entrepreneurs, companies, associations and educational institutions to achieve greater social and economic sustainability. (Gothenburg City budget in 2015, Work and Enterprise)”



The Gothenburg peri-urban challenge



Perspektivskiss över Bergamällden med framtida bebyggelse

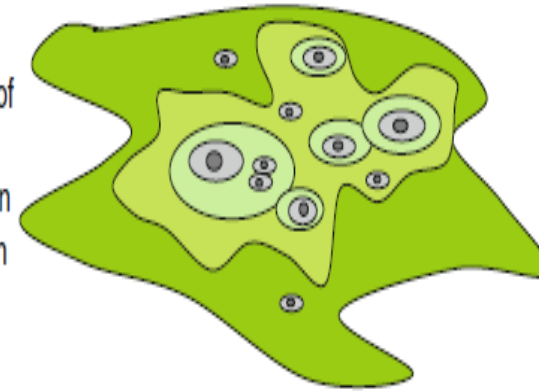


a

Mono-centric settlement pattern

(text book version)

Multiple combinations of urban areas, with peri-urban agglomeration and rural hinterland



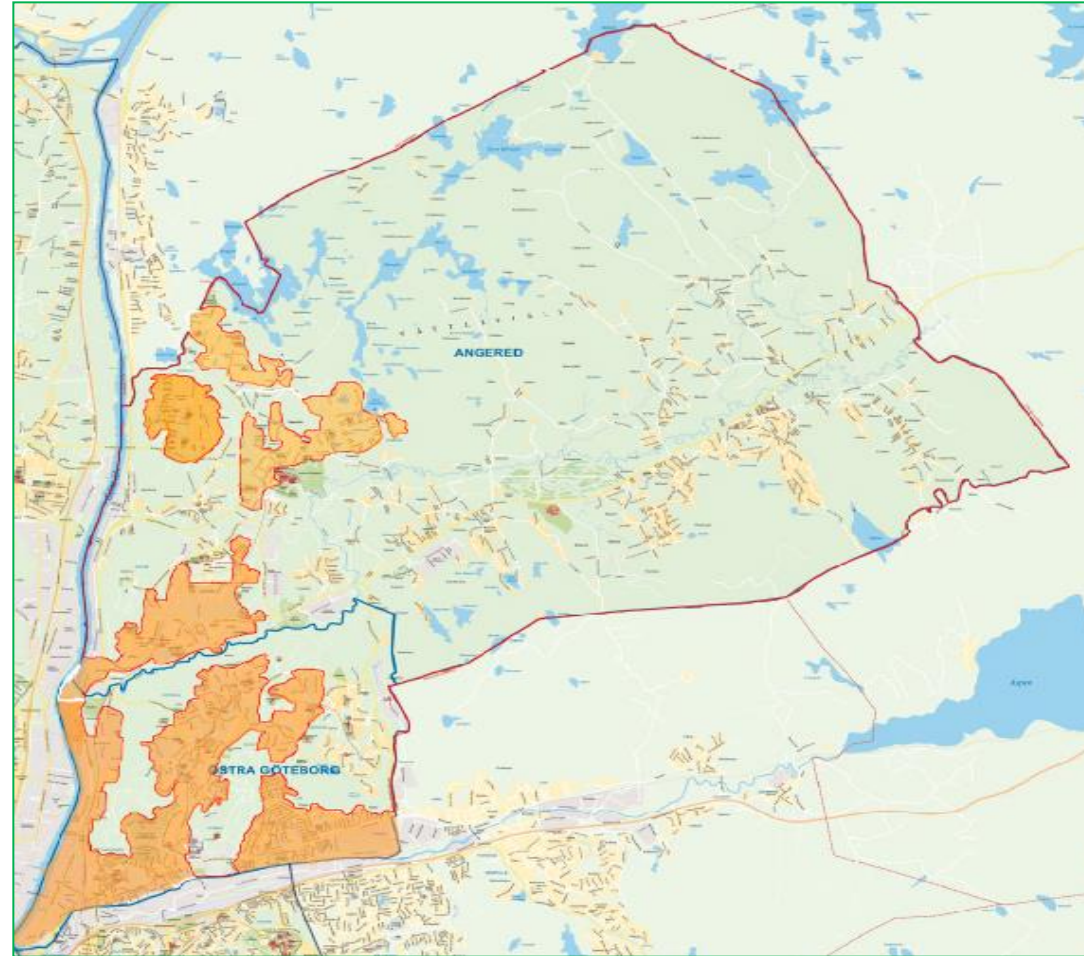
b

Poly-centric agglomeration pattern

(semi-realistic version)



Green and intercultural potentials





stadslandet GÖTEBORG

- Pilot study 2013
- Local hubs / development groups – city and countryside
- Eco – logistics project for improved local production 2014 – 2015
- Pathfinder – Industrial Symbiosis climate smart production
- LEADER Längs Göta älv – Community Led Local Development project
- First national agroforestry congress
- Feasability study: Sustainable local production – food tourism
- ERDF project: Urban Rural Gothenburg 2017 - 2019



Urban – Rural sustainable development

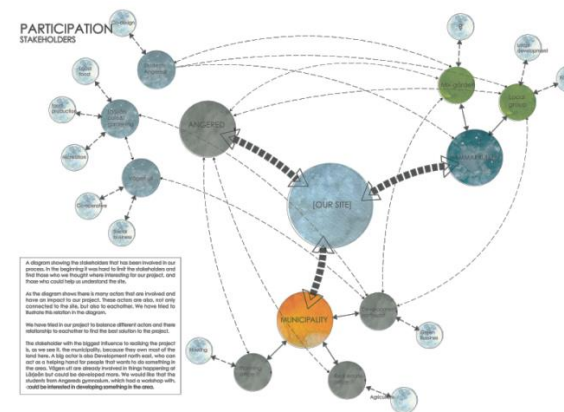
- Reduced segregation and social exclusion within and between urban and rural areas by green business development, social inventions, social entrepreneurship and cultural and creative industries (CCI).
- Testing local economic resource analysis as an instrument for sustainable development also in deprived peri – urban zones.
- New jobs by increased local production and and climate smart local logistics.
- Support the creativity and entrepreneurship of young people.
- Support business development of women and immigrants.
- Sustainable business development by supporting social and circular economy.



Urban- rural Gothenburg - Penta Helix

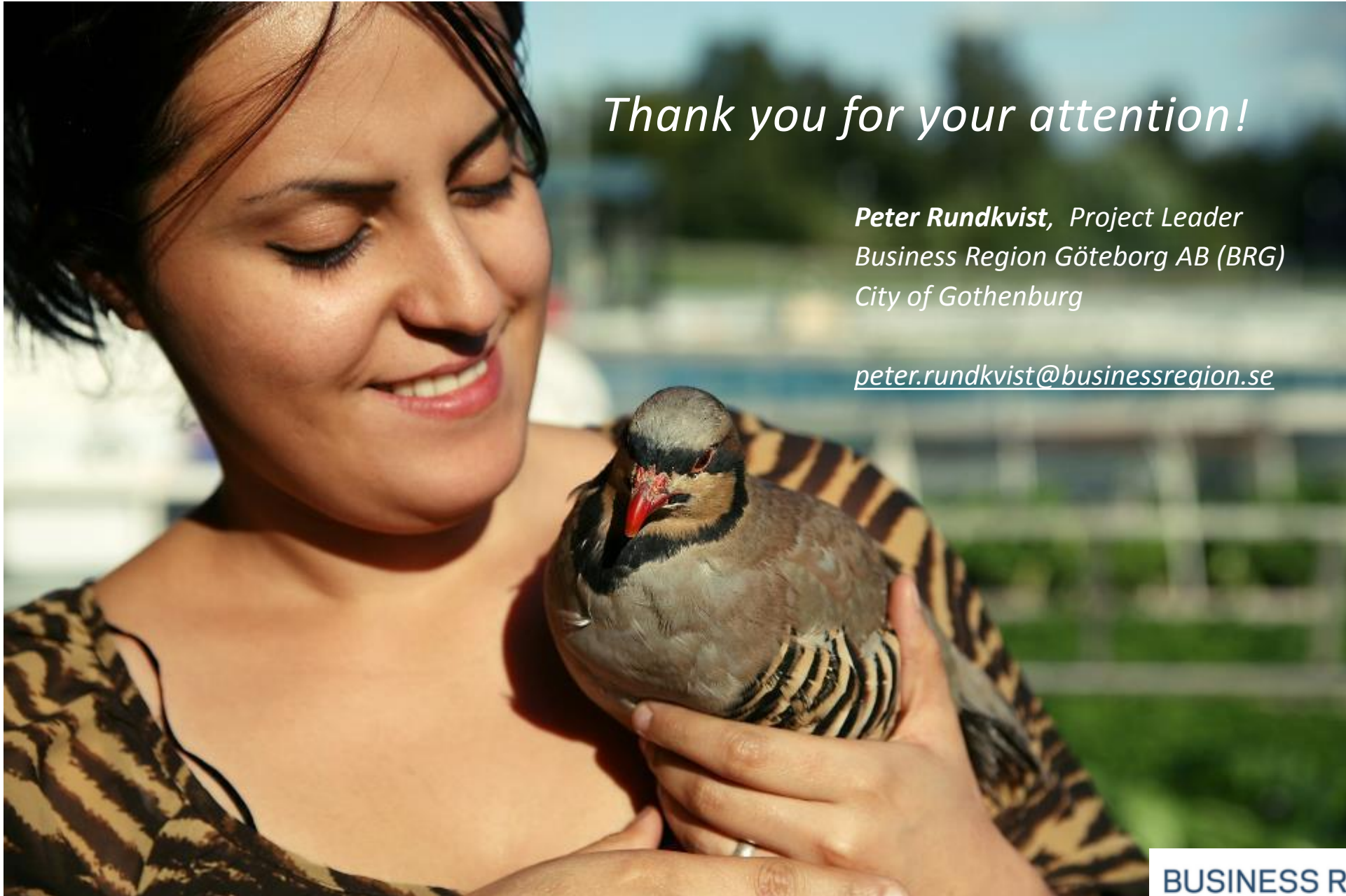
A COLLABORATION BETWEEN:

- Inhabitants
- NGO:s
- Business
- Public sector
- Education / universities



Development hubs



A close-up photograph of a woman with dark hair, smiling warmly as she holds a small, grey and black striped bird with a red beak. The background is a blurred outdoor setting with greenery and a building.

Thank you for your attention!

*Peter Rundkvist, Project Leader
Business Region Göteborg AB (BRG)
City of Gothenburg*

peter.rundkvist@businessregion.se

**BUSINESS REGION
GÖTEBORG**

